



**ARE YOU
READY?
THE ALL NEW
KIOTI SKID
STEER IS
HERE.**


KIOTI

SL SERIES WHEELED LOADER

KIOTI



SL750

KIOTI skid steer loaders are built for professionals who need a machine to be as tough, dependable and durable as they are and need a machine to match that resolve. KIOTI's new skid steer loaders are tailored to meet those ambitions.

The SL750 was designed with comfort in mind to make sure the toughest days don't have to feel that way.

As operators continually push the limits of what compact equipment can accomplish, tackling

bigger and more ambitious jobs, they expect their equipment to pave the way.

KIOTI skid steers are designed to lift, push, and power their way through those rigorous demands, helping them accomplish more.



TL SERIES TRACK LOADER



TL750

KIOTI track loaders are engineered to meet the rigorous demands of professionals who require toughness, reliability, and durability from their machines.

The new KIOTI track loaders, exemplified by the TL750 model, are specifically tailored to match these ambitions. With a focus on comfort, the TL750 ensures that even the toughest days feel manageable for operators.

As operators continually push the boundaries of what compact equipment can achieve,

taking on larger and more challenging tasks, they rely on their equipment to lead the way.

KIOTI track loaders excel in lifting, pushing, and powering through these demanding requirements, enabling operators to accomplish more on the job.

SPECIFICATIONS

EXCEPTIONAL LIFT HEIGHTS (3.2M)

KIOTI skid steers sit among the top of their class for lift heights, bringing ease to jobs such as dumping into trucks and high sided hoppers.

PROVEN KIOTI ENGINE

KIOTI skid steers utilize a powerful 74 horsepower KIOTI engine. This engine, proven over the years in the popular RX-Series tractors, offers excellent performance and reliability.

STANDARD TWO-SPEED TRAVEL

Increased productivity with two-speed travel standard across the KIOTI range, allows operators to quickly transition between low-speed precision and power and high-speed transport.

PILOT HYDRAULIC JOYSTICK CONTROLS

The hydraulic pilot joystick controls on KIOTI compact skid steers offer premium touch and feel, making the machine feel like an extension of the operator. A handy joystick with fingertip controls provide easy access to help manage attachment functions for a smooth and effortless operation.

WIDE, COMFORTABLE CAB

Features a wide and comfortable cab, with a sliding overhead door including a high back suspension seat and optional enclosed cab with HVAC, operators will find added comfort to help reduce fatigue during long days on the job.

SLIDING OVERHEAD DOOR

KIOTI's sliding front door allows for quick entry and exit, regardless of the bucket or attachment positioning. There is also no need to remove the door as it can lock into an open position with ease and unlock when you prefer to enjoy the comforts of the HVAC cab.

LED WORK LIGHTS

Comes standard with LED front and rear working lights making it easier for operators to further enhance visibility when operating in low-light conditions.



SPECIFICATIONS

MODEL	SL750	TL750
ENGINE		
<i>Type</i>	KIOTI	
<i>Horsepower</i>	74hp	
HYDRAULIC SYSTEM		
<i>Loader Hydraulic Pressure</i>	3,335psi (230 bar)	
<i>Auxiliary Standard Flow</i>	21.9gpm (82.9 lpm)	
OPERATING SPECIFICATIONS		
<i>Operating Weight (w/o operator)</i>	4,320kg	4,489kg
<i>Traction Force</i>	2,940kgf	
<i>Bucket Capacity Rated</i>	0.33m ³	
<i>Bucket Capacity Heaped</i>	0.44m ³	
<i>Lift Arm Path</i>	Vertical	
PERFORMANCE		
<i>Tipping Load</i>	2,440kg	2,980kg
<i>Rated Operating Capacity</i>	1,220kg	1,043kg
<i>35% Tipping Load</i>	854kg	1,043kg
<i>50% Tipping Load</i>	1,220kg	1,490kg
<i>Travel Speed: LOW</i>	11.5km/h	8.5km/h
<i>Travel Speed: HIGH</i>	19.4km/h	13km/h
<i>Operating Weight</i>	3,793kg	4,395kg
DIMENSIONS		
<i>Lift Height to Hinge Pin</i>	3,215mm	3,310mm
<i>Length w/o Attachment</i>	2,960mm	
<i>Track Width</i>	-	400mm
<i>Width Over Tyres/Tracks</i>	1,820mm	1,800mm
<i>Height to Top of Cab</i>	2,063mm	2,080mm
<i>Wheelbase</i>	1,200mm	N/A

STANDARD EQUIPMENT

- LED Front and Rear Work Lights
- Hydraulic Pilot Joystick
- Overhead Sliding Front Door
- In-Cab Display
- Auxiliary Hydraulics
- Hydraulic Quick Attach
- Suspension Seat
- 2" Seat Belt
- Self-Leveling (Up only)
- 2-Speed
- 14-Pin Electrical Connector



SPECIFICATIONS

VERTICAL LIFT PATH

The vertical lift path is the load was being lifted vertically. The geometry of the arm allows the boom to raise the bucket straight up to full height. The vertical lift path has better stability, greater lift height, and better operating capacity than the radial lift path.



AUTO SELF-LEVELING SYSTEM

The auto self-leveling system keeps the bucket or fork level without the need to manually adjust the angle on the way up during lifting and this feature can be engaged with the flip of a switch.



Left Control lever(Driving)

Lever button operation

1. 14-pin power supply-G
2. 14-pin power supply-H
3. Ride Control
4. Horn button
5. 14-pin power supply-C
6. 14-pin power supply-D
7. 2-speed button



Right Control lever (Boom&Bucket)

Lever button operation

1. AUX electric mode activation button
2. AUX port : Male coupler port
3. 14-pin power supply-E
4. 14-pin power supply-F
5. AUX port : Female coupler port
6. AUX jog dial



RIDE CONTROL SYSTEM

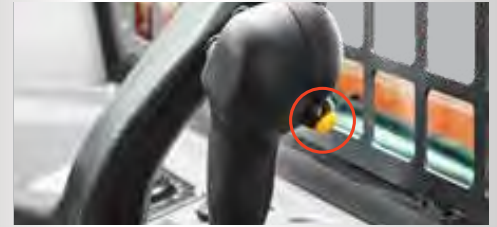
Ride control system helps to reduce operator fatigue and material spillage during operation. An accumulator helps to minimise shock, giving the operator a much smoother ride.



Ride Control "ON"



Ride Control "OFF"



2 TRAVEL SPEED CONTROL

This function provides two travel speeds, so the speed can be selected according to the needs of the site and the operator's preference. This feature helps save time by moving faster and completing jobs quickly.



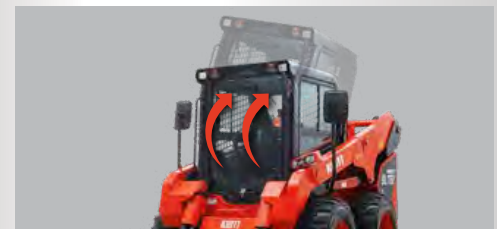
AIR INTAKE FOR ENGINE

The upper protection cover blocks the inflow of rainwater and dust to prevent corrosion of component inside the engine room.



DUAL AIR-CLEANER ELEMENTS

The dual air-cleaner elements are applied to the engine filter. This can filter out dust from the air improving air quality to the engine.



TILT-UP CABIN

A large tilt-up cabin supported by two gas springs makes maintenance easier for parts underneath the cabin.



EMERGENCY BOOM DOWN

In addition to a powered release function, a button at the bottom of the operators seat provides manual functionality for the boom to descend.

SPECIFICATIONS



CONTROL INTERLOCK SYSTEM

Traveling and working devices can only be operated with all seat bars lowered to prevent accidents in unintended situations, such as accidentally touching the joysticks.



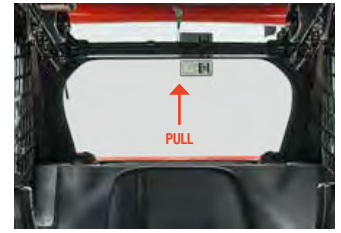
MAIN POWER OFF SWITCH

The main disconnect switch prevents battery discharge during long-term storage. After power is cut off, theft prevention and unintended operating may be prevented through a switch knob separation.



HYDRAULIC QUICK ATTACH

Connect and disconnect from attachments with a push of a button, without leaving the safety and comfort of the cabin.



EMERGENCY ESCAPE

In an emergency, if an operator inside the cabin is unable to escape through the front door, there is an escape through the rear window.



REAR VIEW CAMERA

The rear camera provides the operator with a rear view when traveling or working. The camera screen is displayed on the cluster and automatically changes to the camera screen when traveling backward.



LED WORKING LIGHTS

Bright and long-lasting LED lights are fixed to the front side & rear side of the cabin. (Total 4EA).



EASY OPEN/CLOSE SLIDING DOOR

The sliding front door can be easily opened and closed with little effort. And the loader can operate regardless of whether the door is opened or closed.



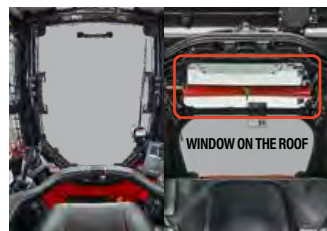
OUTSTANDING A/C PERFORMANCE

Optimised airflow through five vents provides outstanding cooling and heating throughout the year. It also helps manage fog or frost on the windows in cold weather, so as not to interfere with the work.



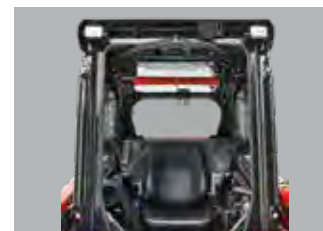
FOOT PEDAL & ROTARY S/W

Engine speed can be controlled by the rotary s/w and the foot pedal during operation. The rotary s/w is suitable for jobs that require constant engine speed. The foot pedal helps the operator during RPM changes.



EXCELLENT VISIBILITY

The wide front window gives the operator an excellent view of buckets or attachments. The roof window provides the operator with a clear view when raising a load above the cabin.



SPACIOUS CABIN

This cabin provides a wide indoor space. Improved comfort for long working hours.





KIOTI

PHONE 1800 186 866

