



## Husqvarna KLIPPO LB 553SQe

KLIPPO LB 553SQe, a reliable and dedicated BioClip® mower with front-wheel drive for commercial use. The full-sized 53 cm cutting deck makes it a perfect solution for mid-sized to larger areas or as a complementary trimming tool for ride-on or robotic mowers. The design has focussed on achieving the best possible ergonomic conditions for the operator and an extra-ordinary cutting results, even in wet weather. Equipped with the fully commercial and high-specified Husqvarna HS 166AP engine, cast aluminium deck, light-weight aluminium wheels and an ergonomic side-adjustable and effective anti-vibrated handle system, which help the model fulfil A(8) EN836. KLIPPO LB 500 Series, commercial models with outstanding performance and durability for a long-term relation.



### Husqvarna HS 166AP engine

HS 166AP, a powerful and fully commercial walk-behind engine from Husqvarna. Designed for high reliability and easy starting. High specified components to withstand tough daily usage and for guarantee longest possible service-life.

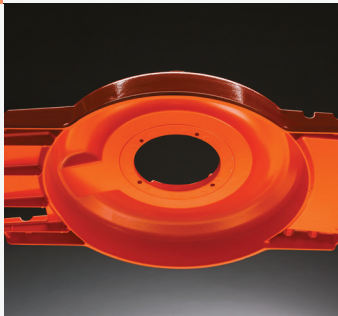


### Aluminium rims

8-inch cast aluminium rims with double-sealed bearings. Rubber tyres provide deeper tread depth for increased traction and a more comfortable drive.

### Aluminium chassis

Heavy-duty, cast aluminium chassis provides increased strength and longer life.



### Cutting height adjustment

Comfortable spring-loaded central cutting height adjustment featuring 5 increments with a span from 28 to 65 mm.



## FEATURES

- Cast aluminium chassis for longer service life
- Cast aluminium rims for longer service life
- A powerful and fully commercial walk-behind engine from Husqvarna. Designed for high reliability and easy starting.
- Comfortable central cutting height adjustment
- BioClip®
- Side protection bumper
- Side adjustable handlebar for optimum user position

Technical Specifications	
<b>BATTERY</b>	
Battery capacity	0 Ah
Battery type	--
<b>CAPACITY</b>	
Net power at preset rpm	2900 rpm
Power output	2.75 kW
<b>DIMENSIONS</b>	
Article gross weight	43500 g
Article net weight	38500 g
Collector volume	0 l
Cutting width	53 cm
Cylinder displacement	166 cm <sup>3</sup>
Handle height adjustment	Yes
Handle height adjustment	2 Step
Weight	38.5 kg
Wheel size, Front	203 mm
Wheel size, Rear	203 mm
Wheelbase	59.5 cm
<b>ENGINE</b>	
Cylinder displacement	166 cm <sup>3</sup>
Electrode gap	0.75 mm
Engine brand	Husqvarna
Engine cooling	Air
Engine name	HS 166AP
Fuel tank volume	1.5 l
Spark plug	Husqvarna HQT-7
<b>EQUIPMENT</b>	
Air filter type	Dual element
BioClip® kit	Not available as accessory (NOT AVAILABLE)
BioClip® plug	N/A
Blade brake clutch (BBC)	No
Blade type	Mulcher blade
CLG Product (Calc)	Yes
Collector	No
Collector type	None
Collector volume	0 l
Deflector	No
Drive control	Lever
Drive system	Self-propelled, single speed
Drive wheels	Front
Foldable handle	No
Handle type	Anti-vibrated
Lawnmower drive type	Front-wheel drive
Side adjustable handle	Yes
Soft grip	Yes
Throttle control	No
Water hose connection	No
Wheel bearing, front/rear	Yes/Yes
Connectivity	Not applicable
<b>LUBRICANTS</b>	
Engine lubrication type	Splash
Fuel consumption	407 g/kWh
Fuel consumption	0.023 l/min
Oil filter	No
Power/fuel type	Petrol
<b>MATERIALS</b>	
Cutting deck material	Aluminium
Master pack: Paper + Cardboard	0 g
Metal total	0 g
Paper + Cardboard total	0 g
PE total	0 g
PET total	0 g
Plastic foil	0 g
Plastic rigid	0 g
Plastic total	0 g
PS/EPS/HIPS total	0 g
Rims, material	Aluminium
<b>PACKAGING</b>	
Packaging height	458 mm

**Technical Specifications**

Packaging length	994 mm
Packaging width	594 mm
Quantity in Master pack	1
<b>SOUND AND NOISE</b>	
Sound power level, guaranteed (LWA)	96 dB(A)
Sound power level, measured	95 dB(A)
Sound pressure level at operators ear	83 dB(A)
<b>VIBRATIONS</b>	
Vibrations handlebar	3.4 m/s <sup>2</sup>